

Magnetic stirrer with hotplate

Accessories: magnet stirrer bars

Magnetic stirrer bar

- cylindrical
- PTFE
- with permanent magnet



| Ø x Length | Order number |
|---------------|--------------|
| Ø 3 x 6 mm | 7 211 001 |
| Ø 3 x 8 mm | 7 211 002 |
| Ø 4.5 x 12 mm | 7 211 003 |
| Ø 4.5 x 15 mm | 7 211 004 |
| Ø 6 x 20 mm | 7 211 005 |
| Ø 6 x 25 mm | 7 211 006 |
| Ø 6 x 30 mm | 7 211 007 |
| Ø 6 x 35 mm | 7 211 008 |
| Ø 8 x 40 mm | 7 211 009 |
| Ø 8 x 45 mm | 7 211 010 |
| Ø 8 x 50 mm | 7 211 011 |
| Ø 9 x 60 mm | 7 211 012 |
| Ø 9 x 70 mm | 7 211 013 |
| Ø 10 x 80 mm | 7 211 014 |

Magnetic stirrer bar

- cylindrical with ring
- PTFE
- with permanent magnet



| Ø x Length | Order number |
|-------------|--------------|
| Ø 3 x 8 mm | 7 212 001 |
| Ø 5 x 12 mm | 7 212 002 |
| Ø 5 x 15 mm | 7 212 003 |
| Ø 6 x 20 mm | 7 212 004 |
| Ø 6 x 25 mm | 7 212 005 |
| Ø 6 x 30 mm | 7 212 006 |
| Ø 6 x 35 mm | 7 212 007 |
| Ø 7 x 40 mm | 7 212 008 |
| Ø 8 x 45 mm | 7 212 009 |
| Ø 8 x 50 mm | 7 212 010 |
| Ø 9 x 60 mm | 7 212 011 |
| Ø 9 x 70 mm | 7 212 012 |

Magnetic stirrer bar set

- 13 different bars + 1 bar retriever (Ø 10 x 150 mm)
- PTFE
- with permanent magnet

| Ø x Length | Shape | Order number |
|---------------|-----------------------|--------------|
| Ø 10 x 6 mm | cylindrical | 7 213 112 |
| Ø 4.5 x 15 mm | | |
| Ø 6 x 20 mm | | |
| Ø 6 x 25 mm | | |
| Ø 6 x 30 mm | | |
| Ø 8 x 40 mm | | |
| Ø 8 x 50 mm | | |
| Ø 9 x 60 mm | | |
| Ø 4.5 x 15 mm | cylindrical with ring | |
| Ø 6 x 25 mm | | |
| Ø 8 x 40 mm | | |
| Ø 8 x 25 mm | oval | |
| Ø 14 x 40 mm | | |

Magnetic stirrer bar

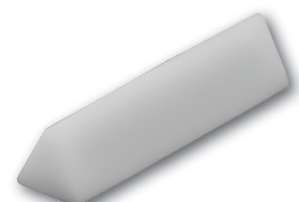
- oval (especially for round bottom flasks)
- PTFE
- with permanent magnet



| Ø x Length | Order number |
|----------------|--------------|
| Ø 10.5 x 20 mm | 7 214 001 |
| Ø 12 x 25 mm | 7 214 002 |
| Ø 15 x 30 mm | 7 214 003 |
| Ø 15 x 35 mm | 7 214 004 |
| Ø 20 x 40 mm | 7 214 005 |
| Ø 20 x 50 mm | 7 214 006 |
| Ø 20 x 65 mm | 7 214 007 |
| Ø 20 x 71 mm | 7 214 008 |

Magnetic stirrer bar

- triangular
- PTFE
- with permanent magnet



| Ø x Length | Order number |
|--------------|--------------|
| Ø 8 x 12 mm | 7 213 001 |
| Ø 8 x 25 mm | 7 213 002 |
| Ø 10 x 35 mm | 7 213 003 |
| Ø 12 x 50 mm | 7 213 004 |

Magnetic stirrer bar

- cylindrical
- borosilicate glass coated
- with permanent magnet



| Ø x Length | Order number |
|--------------|--------------|
| Ø 8 x 20 mm | 7 211 019 G |
| Ø 8 x 25 mm | 7 211 020 G |
| Ø 10 x 30 mm | 7 211 021 G |
| Ø 12 x 40 mm | 7 211 009 G |

Magnetic stirrer bar retrievers

- magnet only at one end
- PTFE

| Ø x Length | Order number |
|---------------|--------------|
| Ø 10 x 150 mm | 7 218 001 |
| Ø 10 x 250 mm | 7 218 002 |
| Ø 10 x 300 mm | 7 218 003 |
| Ø 10 x 350 mm | 7 218 004 |
| Ø 10 x 400 mm | 7 218 005 |

